



Operations Manager

Michael Worman

Nampa Civic Center

Spectra Venue Management

Michael.Worman@spectrarp.com

[O: 208-468-4485](tel:208-468-4485) [M: 208-514-8032](tel:208-514-8032)

THEATER INFORMATION

10/17/2019



ETC/Elec Theatre Controls LMNT-40-250
40 Fader, 250 Channel Element Lighting Console



SPOT LIGHT X 2



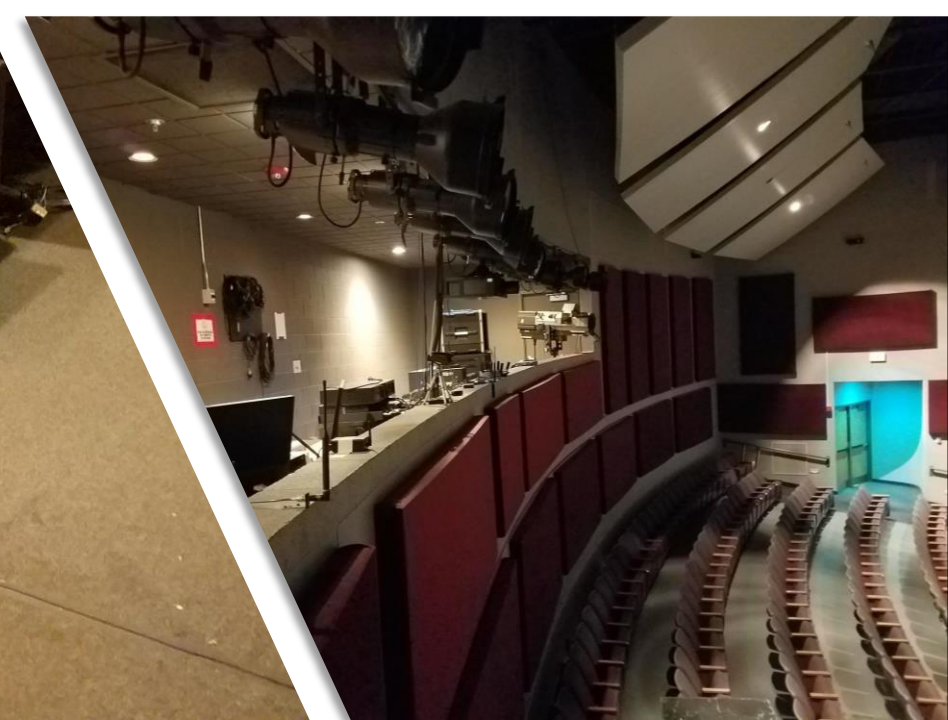
Behringer X32 40-Channel, 25-Bus Digital Mixing Console



LIGHTING CONTROL SYSTEM

- Series: Sensor3 SR
- Model: SR3-48
- High dimmer density
- Up to two 2.4kW dimmers per module
- Two DMX512-A inputs
- Supports ETC dimmer doubling







Hitachi CP-X8800B Projector

- 8000 ANSI lumens white/color output
- 10,000:1 contrast ratio



GENIE AWP SUPER SERIES

- Platform height 35 ft



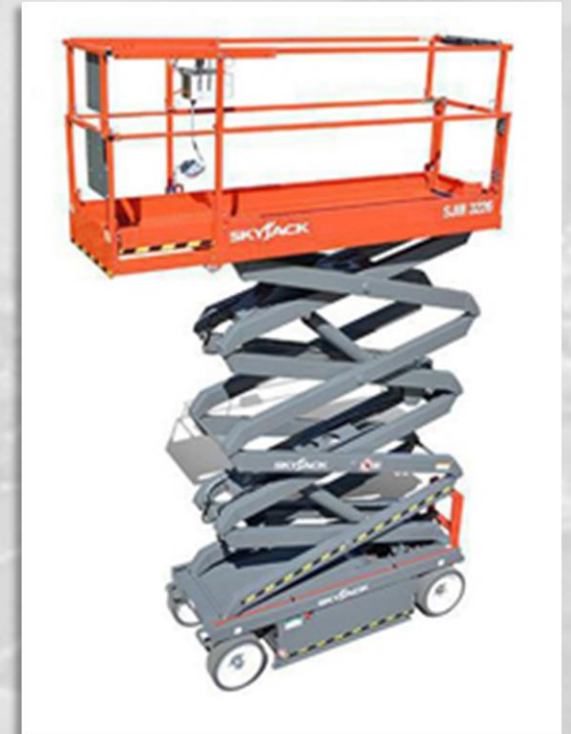
STAGE POWER

- 60 AMP X 2
- 200 AMP
- 100 AMP



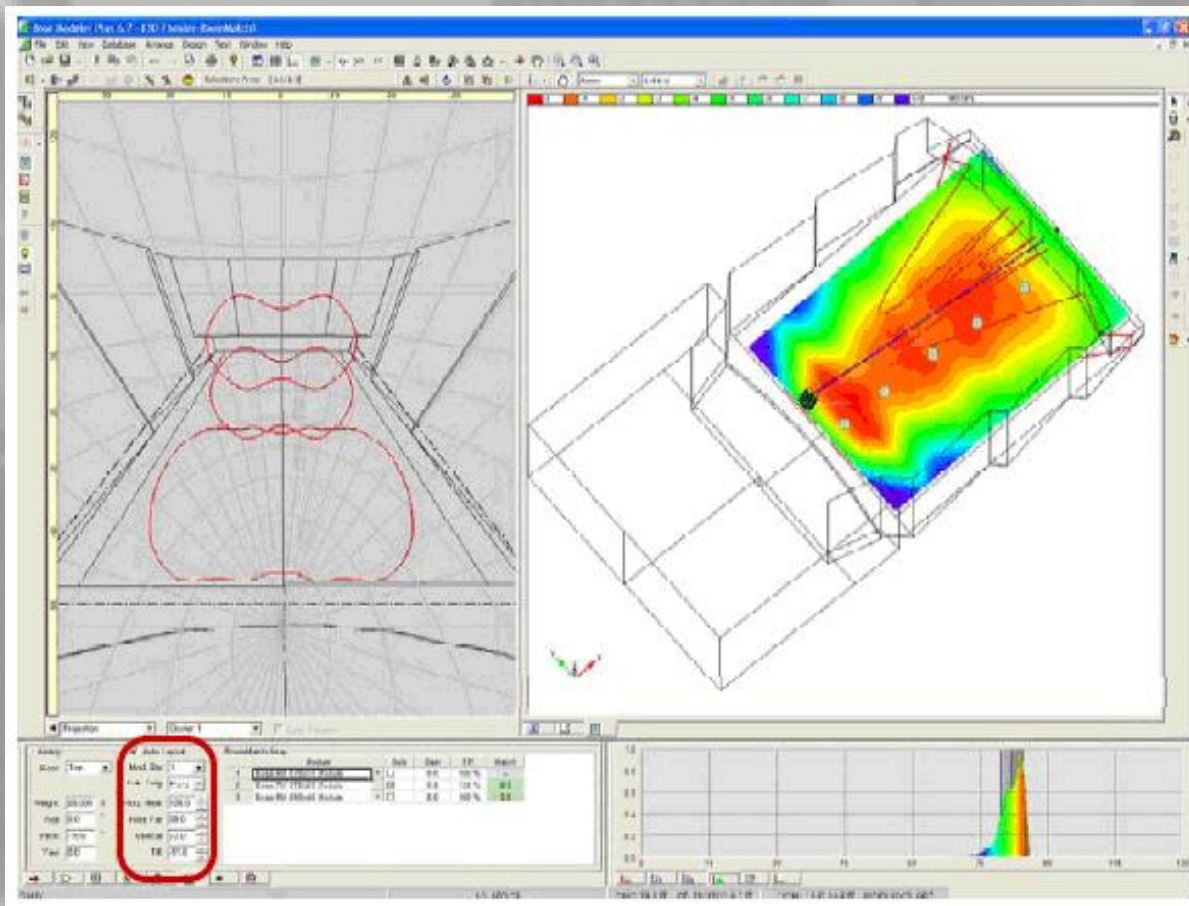
SCISSOR LIFT SKYJACK 3219

- Platform height 19 ft



BOSE SOUND SYSTEM

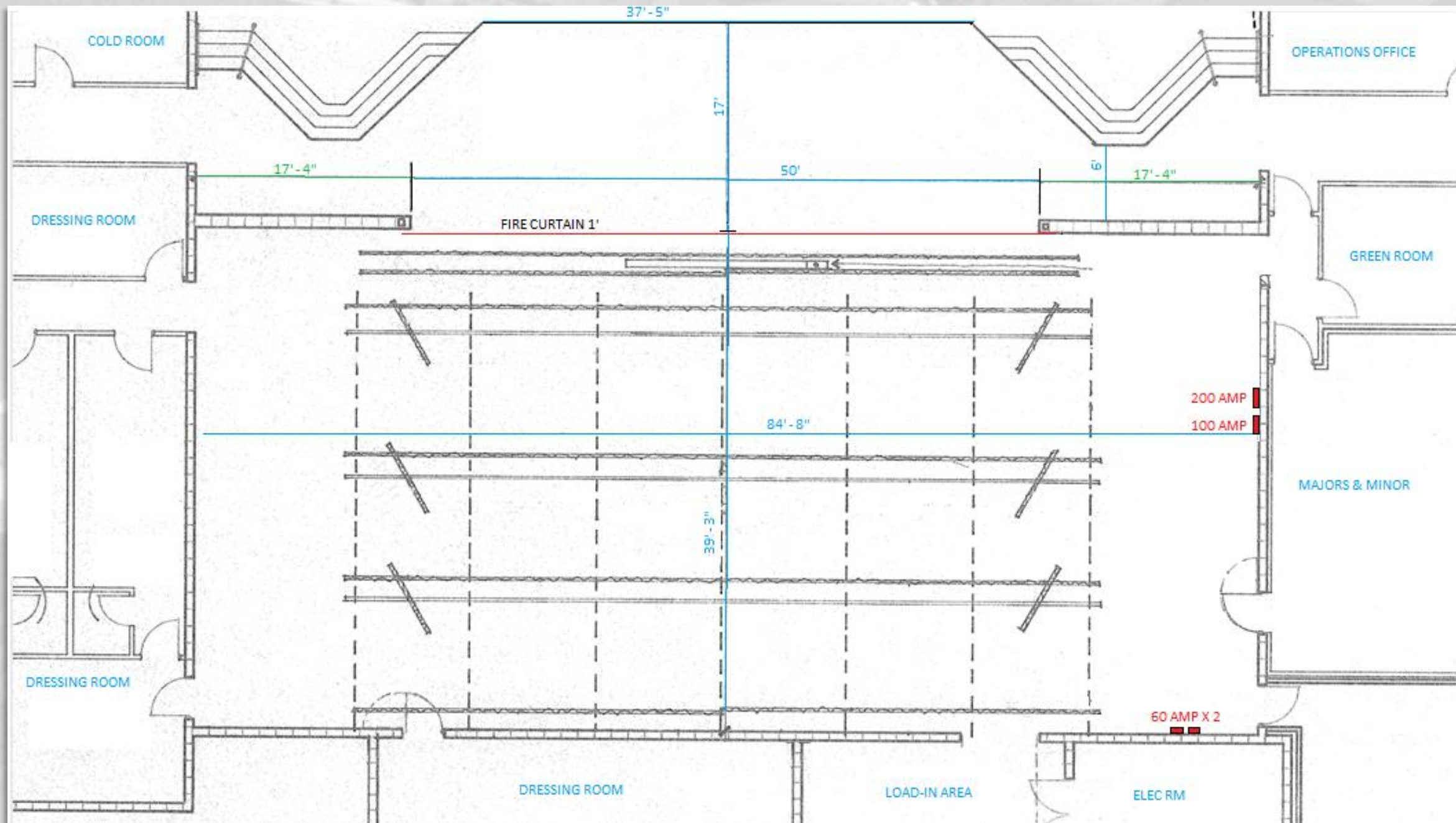
- Bose Expands Room Match RM603540
- Room match BOSE RMS218 VLF Subwoofer
- Power match PM4500N Amplifier
- Power match PM8500N Amplifier
- Card, Power match ESPLINK 8 CH Input Card
- Control space ESP-880 Processor 1RU, W/Rear Ethernet Card
- System Max 96 Decibal





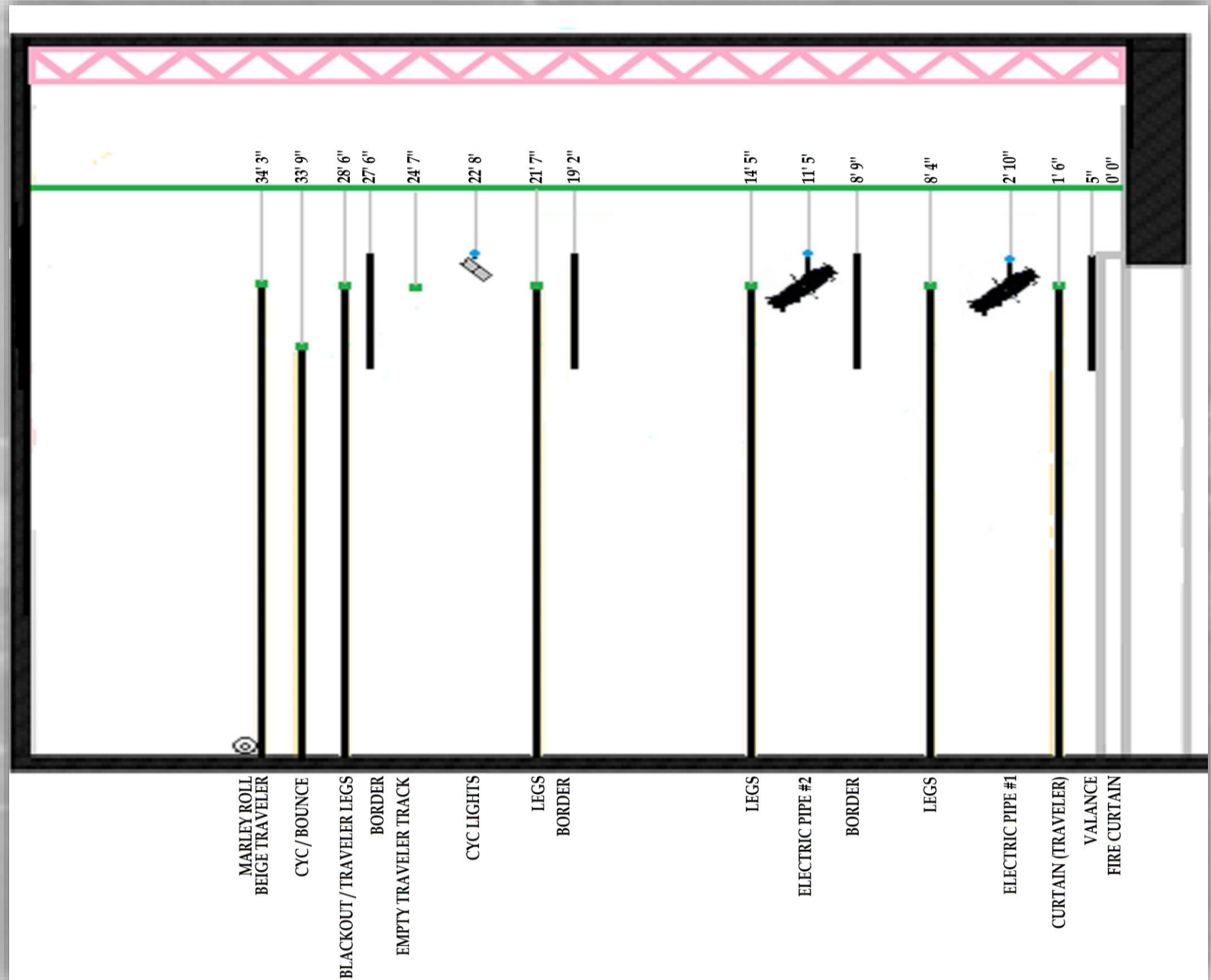
STAGE AREA

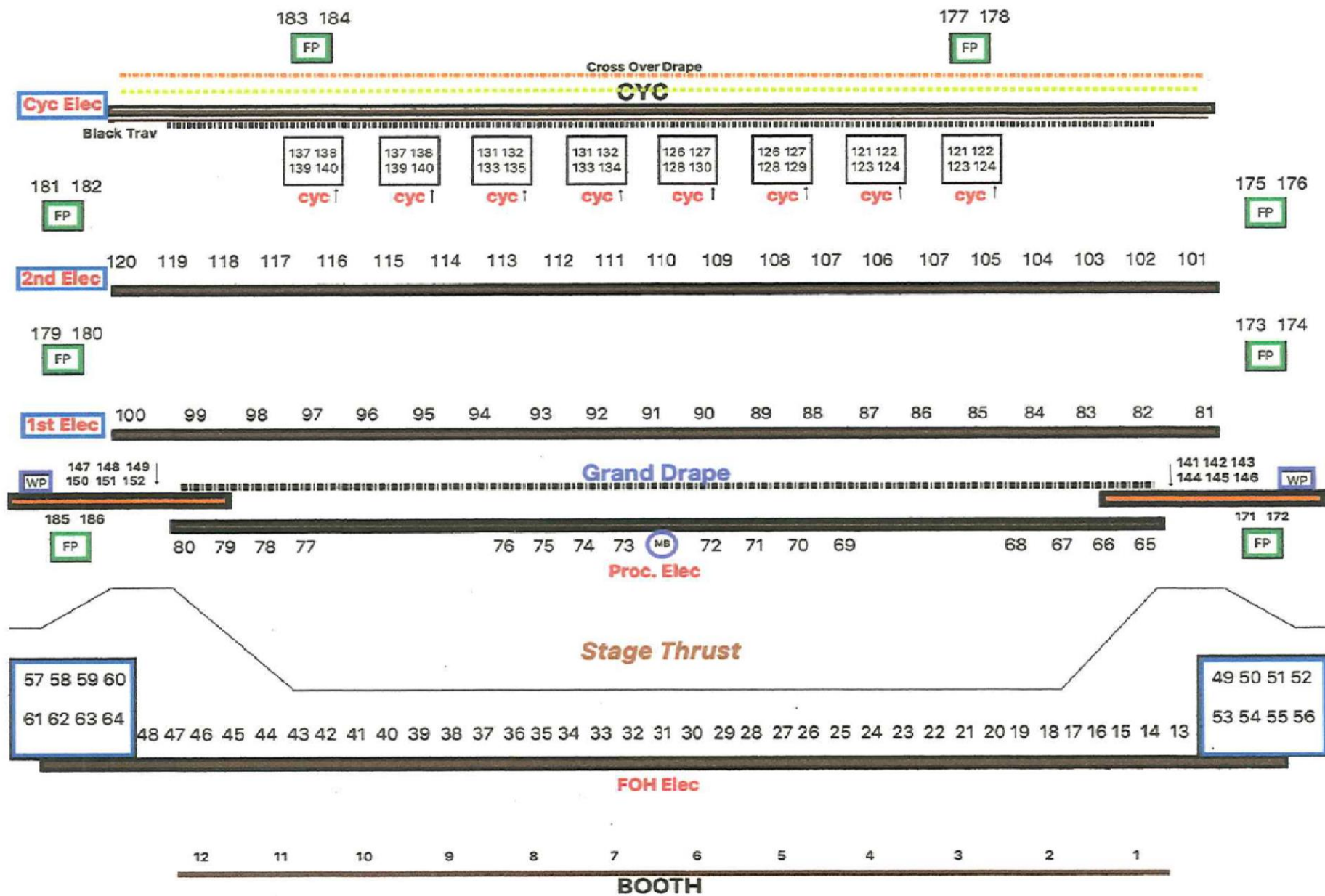
- Proscenium Opening: 50' W x 24' H
- Proscenium to End of Thrust: 17'
- Total Stage Depth (Curtain Line to Back Wall) 39'
- Standard Usable Stage Depth: 22' (13' Storage & 3' Crossover)
- Trim Height: 18'
- Dead Hang Track Height: 27'
- Dead Hang Winch Height: 22'
- Wing Space: 18'
- House Curtain Style: Traveler
- Legs, Borders, Trim, Back Cyc Curtain: Black



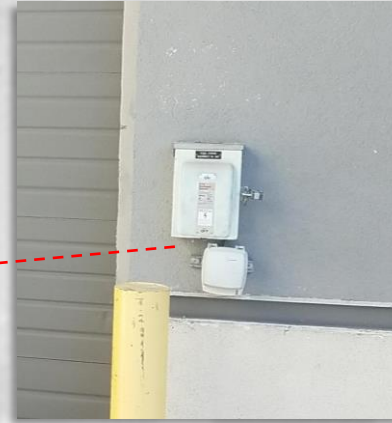
STANDARD HOUSE LIGHTING SETTINGS

- House Row: 36 Circuits, 36, 6" Ellipsoidals (Plus: 8 ETC Elliposidals, 4- 15°-30°, 2 26° and 2 36°)
- Thrust Row: 20 Circuits, 36 6" Fresnels, "Two-Fer"
- First Electric Row: 20 Circuits, 6, 6" Fresnels, 4 Two Light Far Cyc
- Second Electric Row: 20 Circuits, 16, 6" Fresnels
- Third Electric Row: 20 Circuits, 8 Four Light Far Cyc
- Spot Booths: 6 Circuits
- Stage Tree Circuits: 6 on each side
- Extra Lighting Instruments: Trac Spots: 8 "High End", 2 Martin Robo Scan Pro 918 & 16" Disco Ball



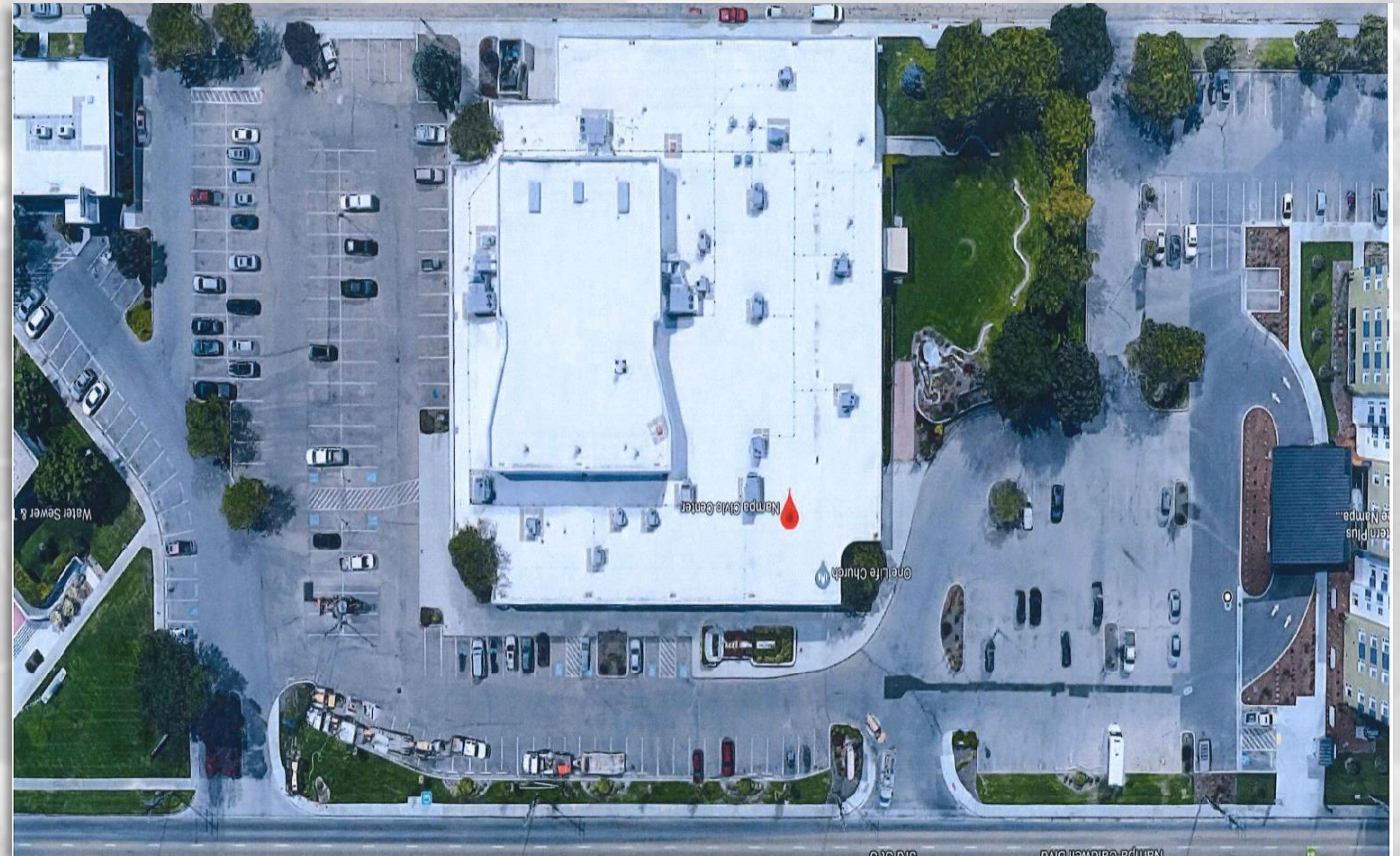


LOADING DOCK



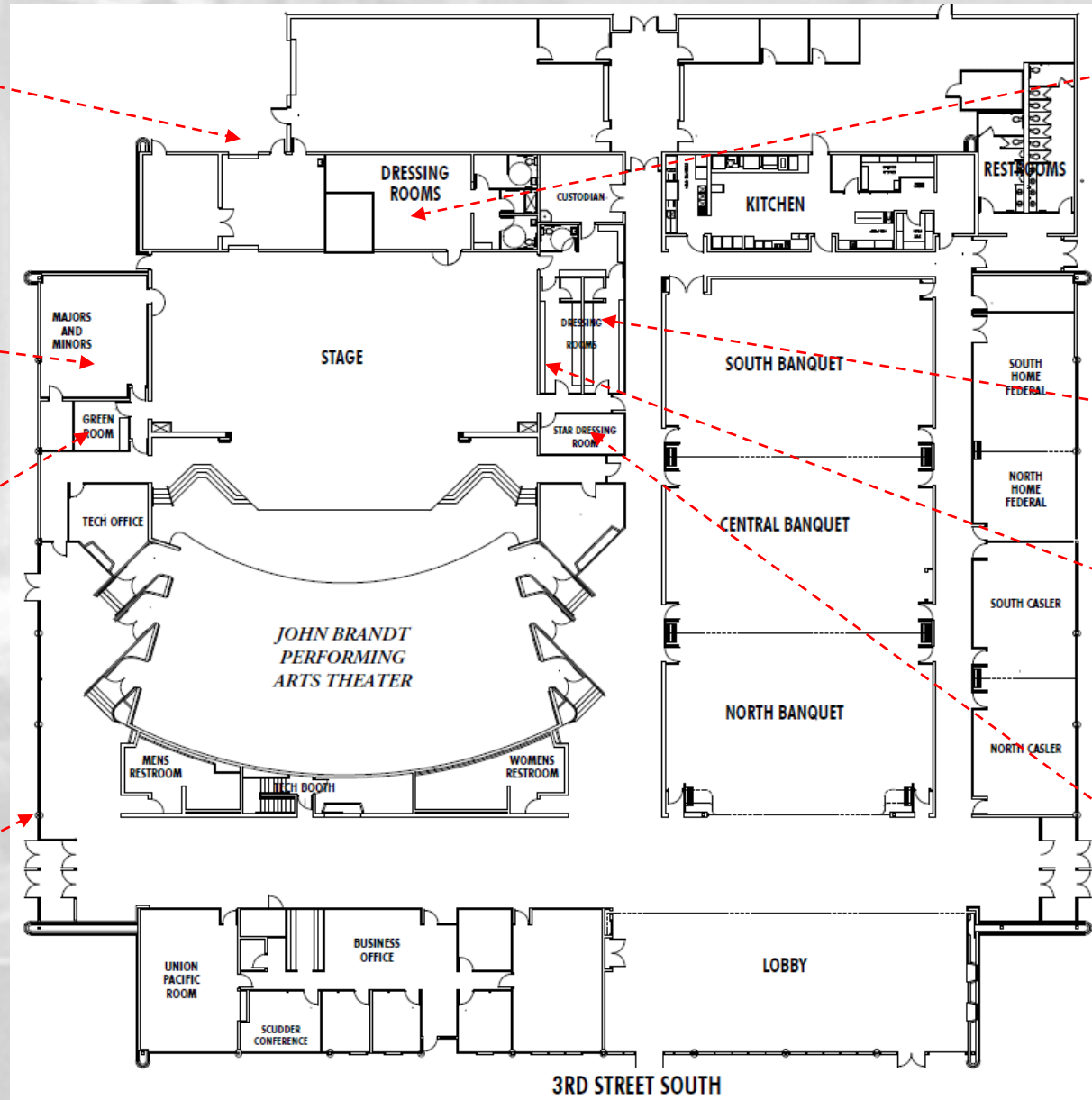
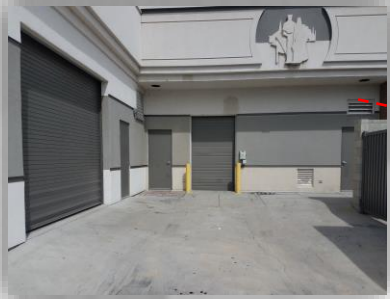
**TOUR BUS POWER
AVAILABLE 50'
EXTENSION CORD**

PARKING



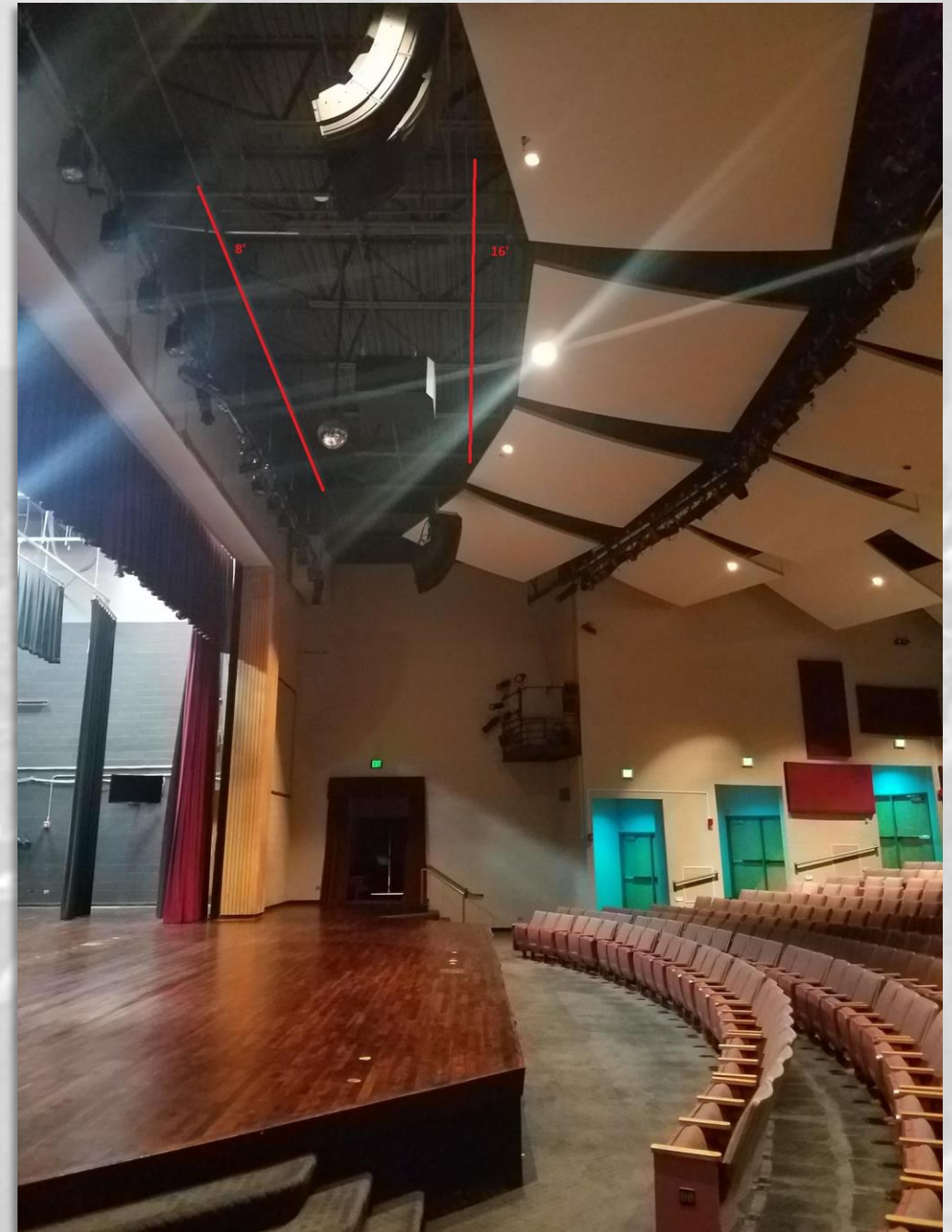
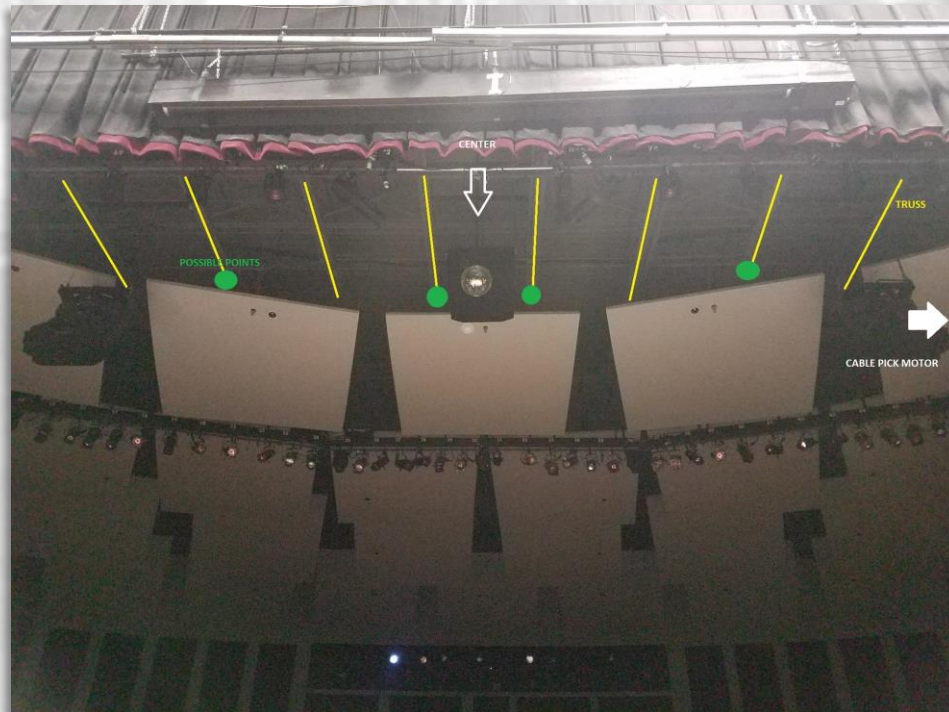
BOX OFFICE



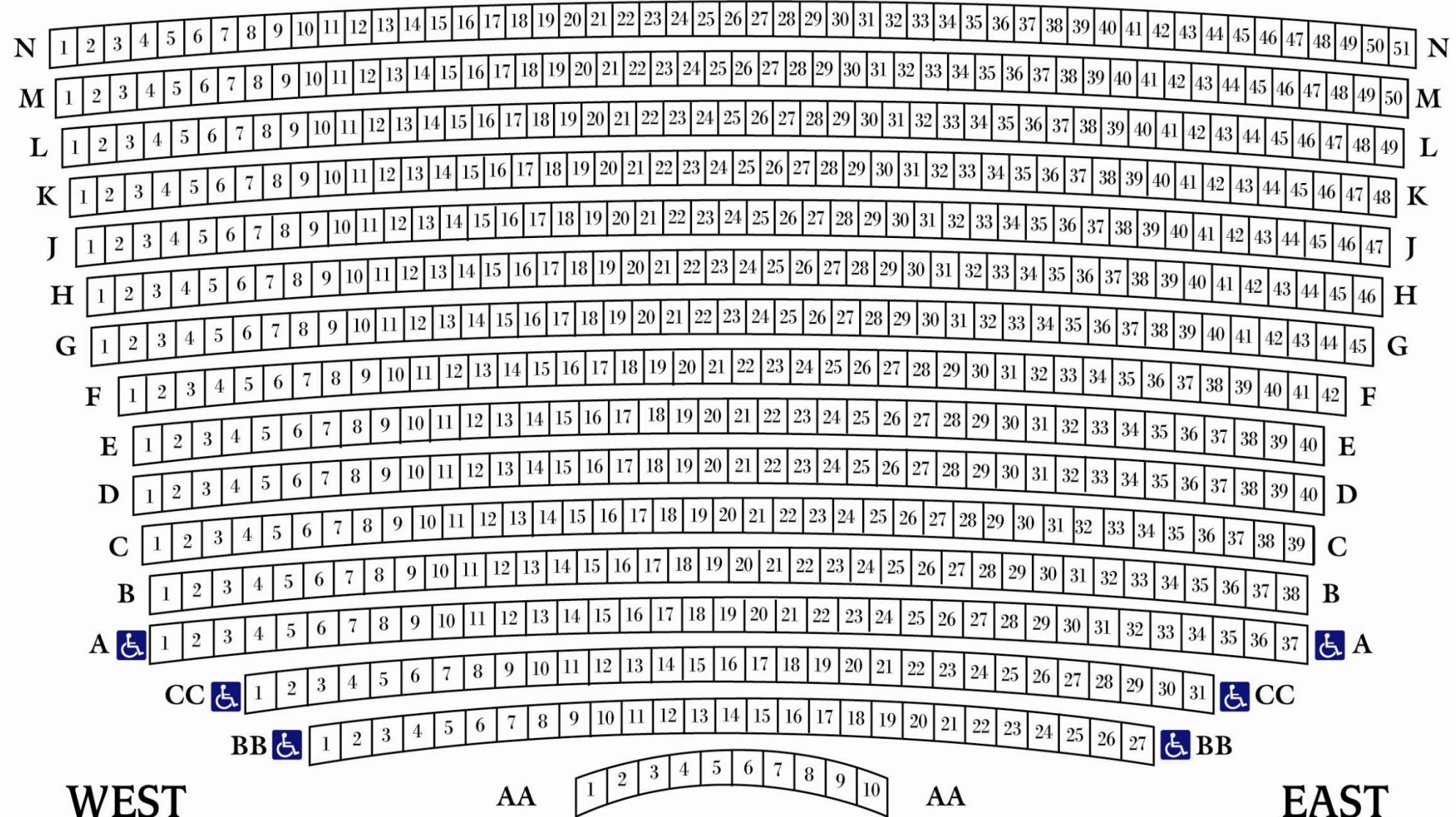


THEATER RIGGING

- The roof and rigging infrastructure over the **Front Stage** is support by 44LH12 Long span Steel Joists at 6'0" on center. Their span length is 84 feet. These joists are capable of supporting an additional 3,000 lbs. maximum load on any panel point or spread uniformly over the length of the joist.
- The roof and rigging over the **Back Stage** is supported by 24LH04 Long span Steel Joists at 6'0" on center. Their span length is 41 feet. These joists are capable of supporting an additional 1,500 lbs maximum load on any panel point or spread uniformly over the length of the joists.



646 SEATS WITH OPTION TO
ADD 32 CHAIRS



ROW AA OPTION TO REMOVE

PRODUCTION NEEDS

- Sound Operator
- Light Operator
- Lighting Design
- Live Streaming
- Video Recording
- Marketing
- Stage Hands
- Rigging
- Tables
- Chairs
- Microphones / Stands
- Piano's x 5
- Fog Machines
- Projection Screens
- Assisted Listening
- Flags
- Mirrors
- Monitors
- DVD Player
- Telex
- Carpet
- Sound Table 4' & 8'
- Blue Ray Player
- CD/Tape Player
- Podiums
- White Boards
- Hand Truck / Carts
- Power Cords
- Laptops
- Uplights
- TV's
- Pipe & Drape
- Side Lights
- Easels
- Computer/ Phone Adapters
- Music Stands
- Music Stand Lights
- Video Switcher
- Sound Snakes
- Bar Stools
- Metal Detectors
- Washer & Dryer
- Shower
- Steamer / Iron
- Barriers
- Step & Repeat
- Coat Racks
- Professional Presenter (Clicker)
- Lot's of Our In House Equipment Not Listed

Don't See What You Need For Your Event, Let us Know and We Will Arrange To Have It Available When You Need It.